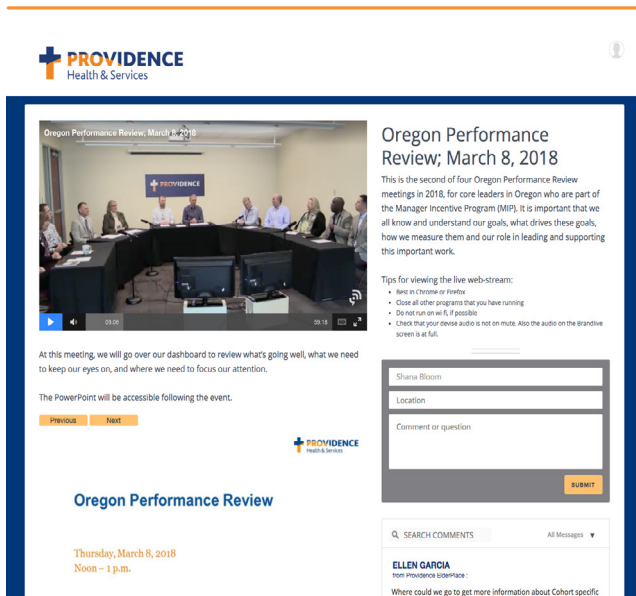


NO ENROLLMENT FORM REQUIRED
Sole-Source | Not Bid

Brandlive: The Leading LIVE and On-Demand Video Streaming Platform



BRANDLIVE™ PROVIDES A cloud-based software platform that integrates live video + social interactive chat + customized calls to action. We are used by major brands to conduct live interactive video events for internal town halls, training, marketing, and community engagement. Our innovative solution enables organizations to put their best presenters and experts on camera and broadcast directly to global audiences, creating an immersive experience that bridges the gap between physical and digital audiences. Healthcare organizations use Brandlive to dramatically increase physician and patient education, activate influencers and industry experts, and reduce internal training and travel costs.



The Integrated Elements

LIVE VIDEO

Live video creates a direct connection between product experts on camera and key digital audiences viewing on computers, tablets and mobile devices. Using live video enables brands to tell product stories and conduct in-depth product demonstrations.

SOCIAL INTERACTION

With our Chat module, viewers communicate with brands in real time, asking questions and giving feedback, creating an immersive conversation directly with product experts and each other.

CALL TO ACTION

Engage your audience instantly with surveys, quizzes, links to downloadable content, and 'Donate Now' / 'Buy Now' buttons. These features allow attendees to engage with custom content during live events.

What Brandlive is Used For

TRAINING

Live training events are a cost-effective way to train associates, engage buyers, and educate teams with consistent product knowledge.

MARKETING

Create authentic brand and product storytelling experience in an entertaining interactive format that helps to create emotional connections with the audience.

COMMUNITY ENGAGEMENT

Launch new products and initiatives, host educational series, and utilize social and email to engage with your audiences.

CLINICAL EDUCATION COURSES

Offer live continuing education courses, quizzes and assessments that can be taken directly from the event page, and download certificates of completion immediately. Use Brandlive's video-first LMS to assign courses to individual users, tracking progress and participation via robust performance metrics.

Contract Value

Price protection: Prices are firm for the initial term of the agreement, but may be subject to reduction due to market conditions. Initial term is two years as shown above; up to two one-year extension options may be exercised at Vizient's discretion.

CONTACT BRANDLIVE
www.brand.live
866-532-2154

